



RETAIL DEVELOPMENT PARCELS

Goodman Rd. & Hwy 302 - Olive Branch, MS 38654

AVAILABLE ANCHOR SITES AND PAD SPACES COMING SOON



Site Specialists, LLC.

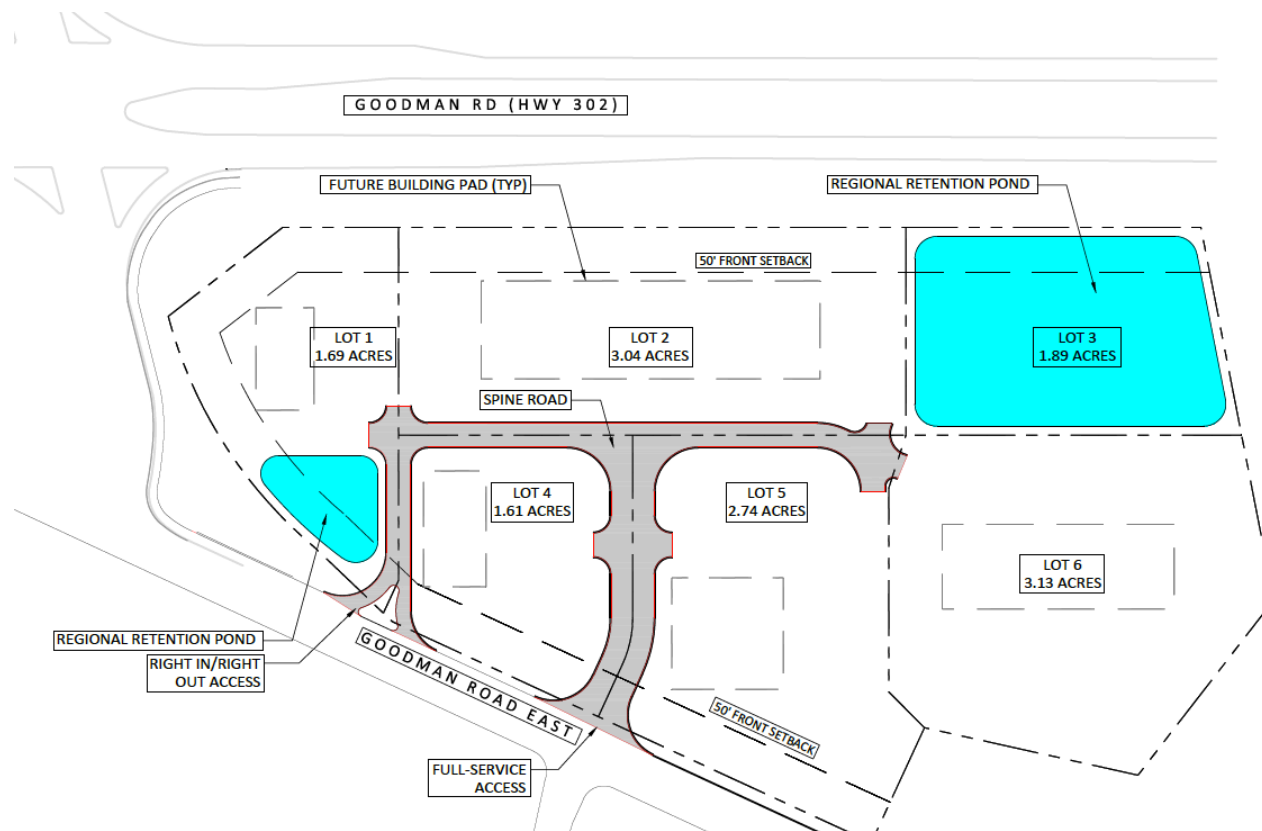
336 Lafayette St.
Suite 301
New Orleans, LA 70130
O (504) 324-5414

Contact:

Chris Jacob

Vice President
cjacob@site-specialists.com
C (225) 485-4881
D (504) 324-4041
Licensed in LA & MS

Property Information



**SEC Goodman Rd. & Hwy 302.
Olive Branch, MS 38654**

Total Size:

+/- 13.95 acres

Available:

Development parcels from 1 acre and up

Destinations:

Downtown Memphis: 20 minutes

Memphis International Airport: 15 minutes

Tunica Casinos: 30 minutes

“2011 Fastest Growing City in the US”

- Bloomberg Business Week

CNN Money “Best Places to Live”

- Top 100 for 2 years

“Best Places to Retire”

- US News & World Report

Olive Branch:

- Recognized as having the best public schools in the state of MS
- Location of Metro Park Airport, the busiest airport in MS.
- Home to more than 80 manufacturing and distribution centers, located within our industrial parks.
- Fastest growing city in the fastest growing county in MS.

DeSoto County:

- States best school system and affordable housing market.
- The median household is higher than the US national average with great buying power.
- Population growth is amongst the highest in the US.
- Home of the largest youth baseball complex in the US, Snowden Grove.
- Named the healthiest county in MS.

5 Mile Radius



89,374
2017 Total Population (Esri)

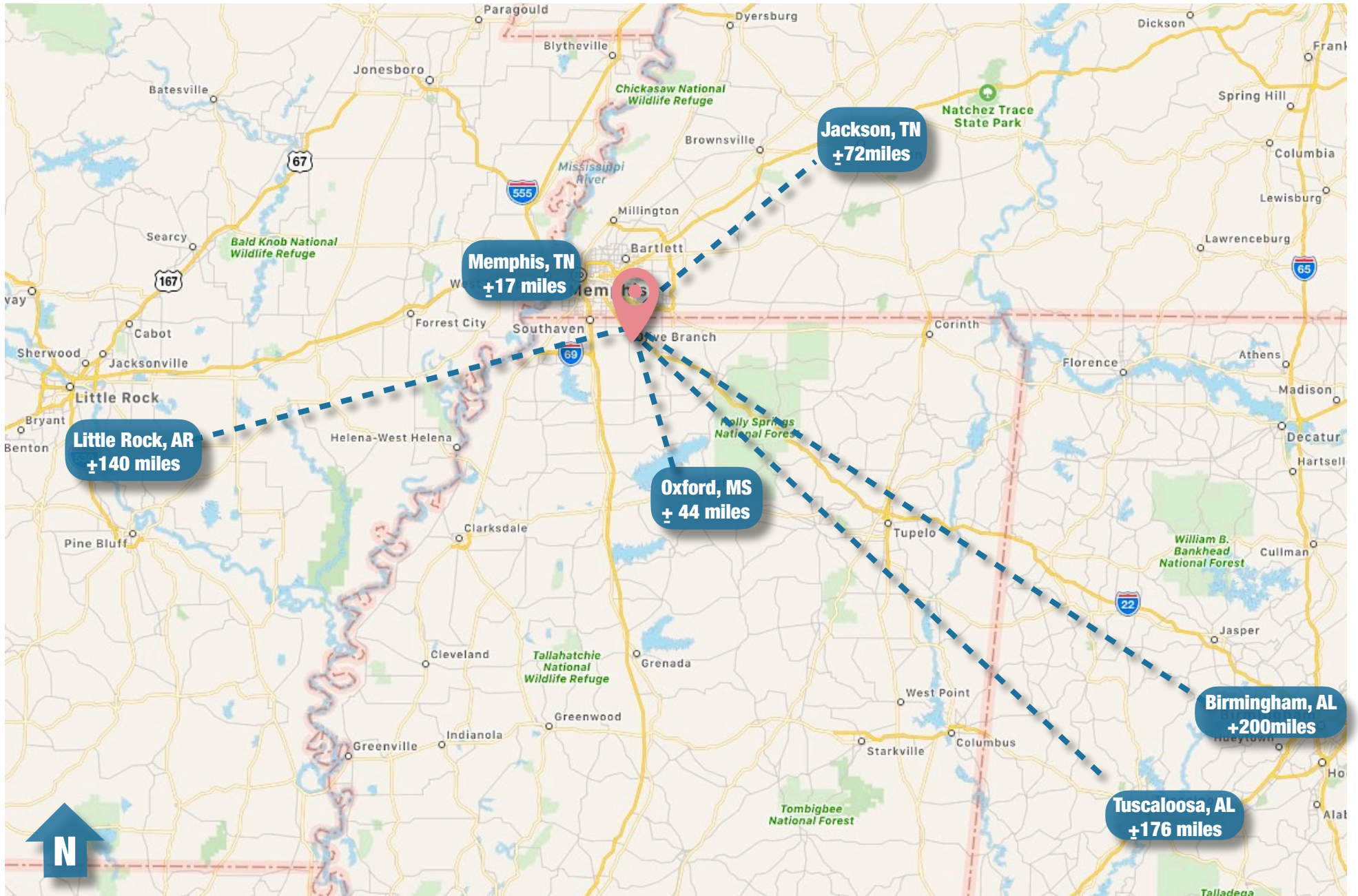


30,937
2017 Total Households (Esri)

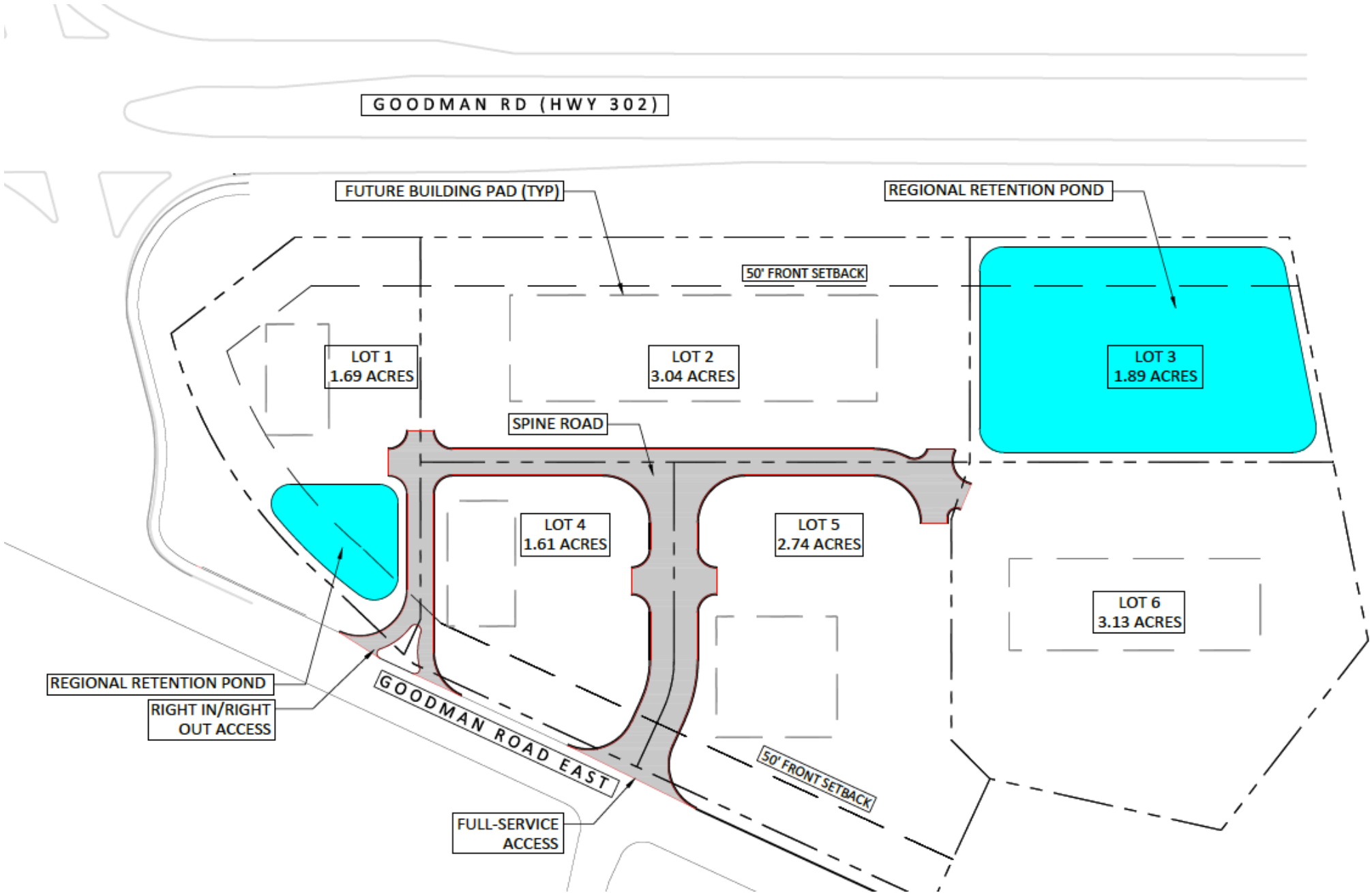


\$78,541
2017 Average Household Income (Esri)

Area Map



Master Plan



Demographics

