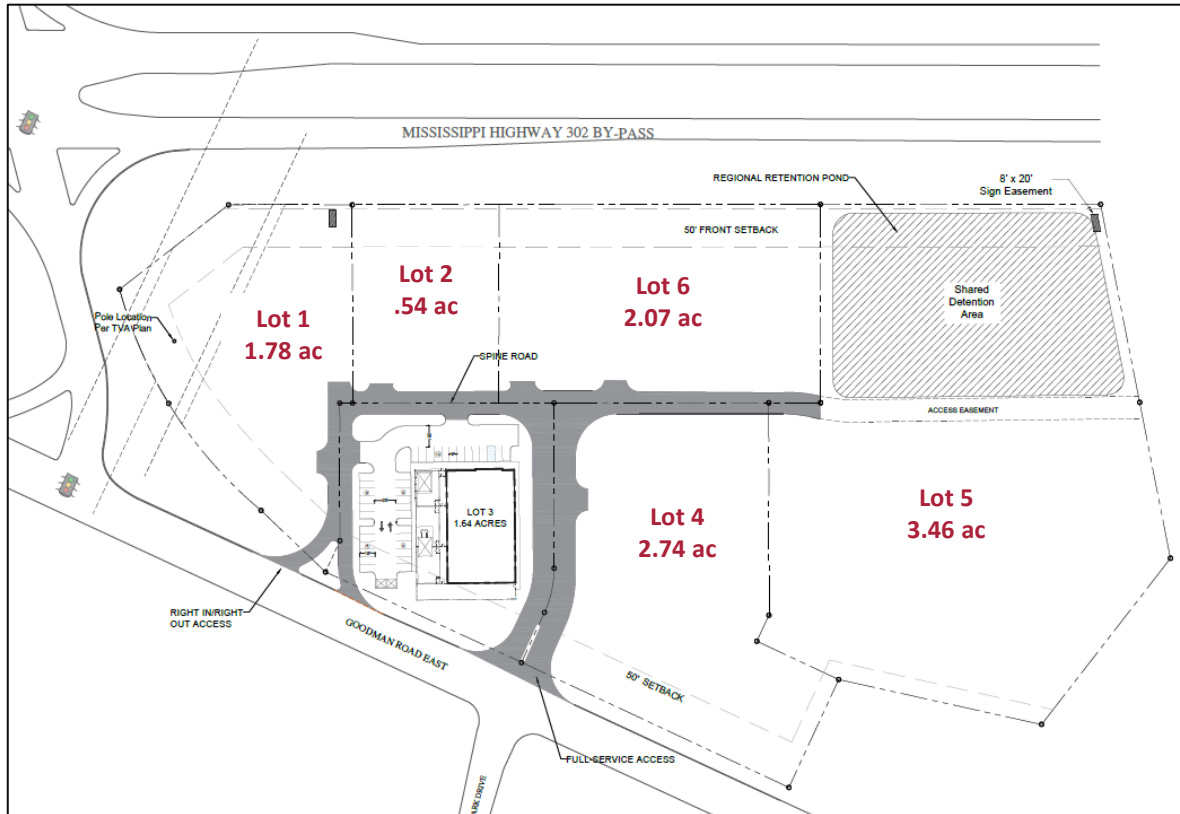




# Property Information



**SEC Goodman Rd & Hwy 302**  
**Olive Branch, MS 38654**

## Total Size:

+/- 13.95 Acres

## Available:

Development parcels from 1acre and up

## Destinations:

**Downtown Memphis:** 20 minutes

**Memphis International Airport:** 15 minutes

**Tunica Casinos:** 30 minutes

## “Safest Small City in Mississippi”

-Money Geek 2022

## CNN Money “Best Places to Live”

- Top 100 for 2 years

## “Best Places to Retire”

- US News and World Report

## Olive Branch:

- Recognized as having the best public schools in the state of MS.
- Location of Metro Park Airport, the busiest airport in MS.
- Home to more than 80 manufacturing and distribution centers, located within our industrial parks.
- Fastest growing city in the fastest growing county in MS.

## Desoto County:

- State’s best school system and affordable housing market.
- The median household is higher than the US national average with great buying power.
- Population growth is amongst the highest in the US.
- Home of the largest youth baseball complex in the US Snowden Grove.
- Named the healthiest county in MS.

## 5 Mile Radius



**91,976**  
 2021 Total Population  
 (ESRI)



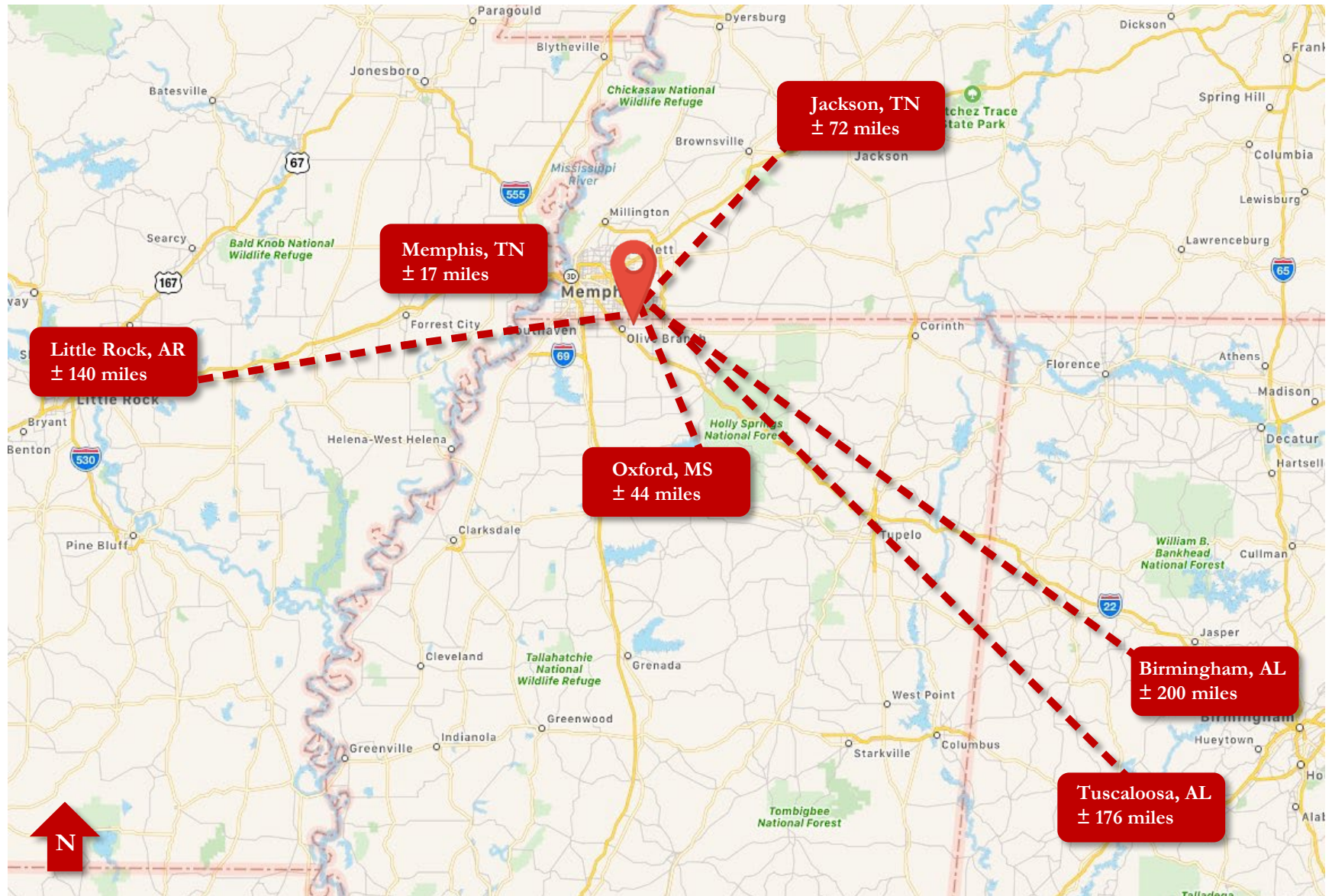
**32,069**  
 2021 Total  
 Households (ESRI)



**\$88,637**  
 2021 Average  
 Household Income  
 (ESRI)

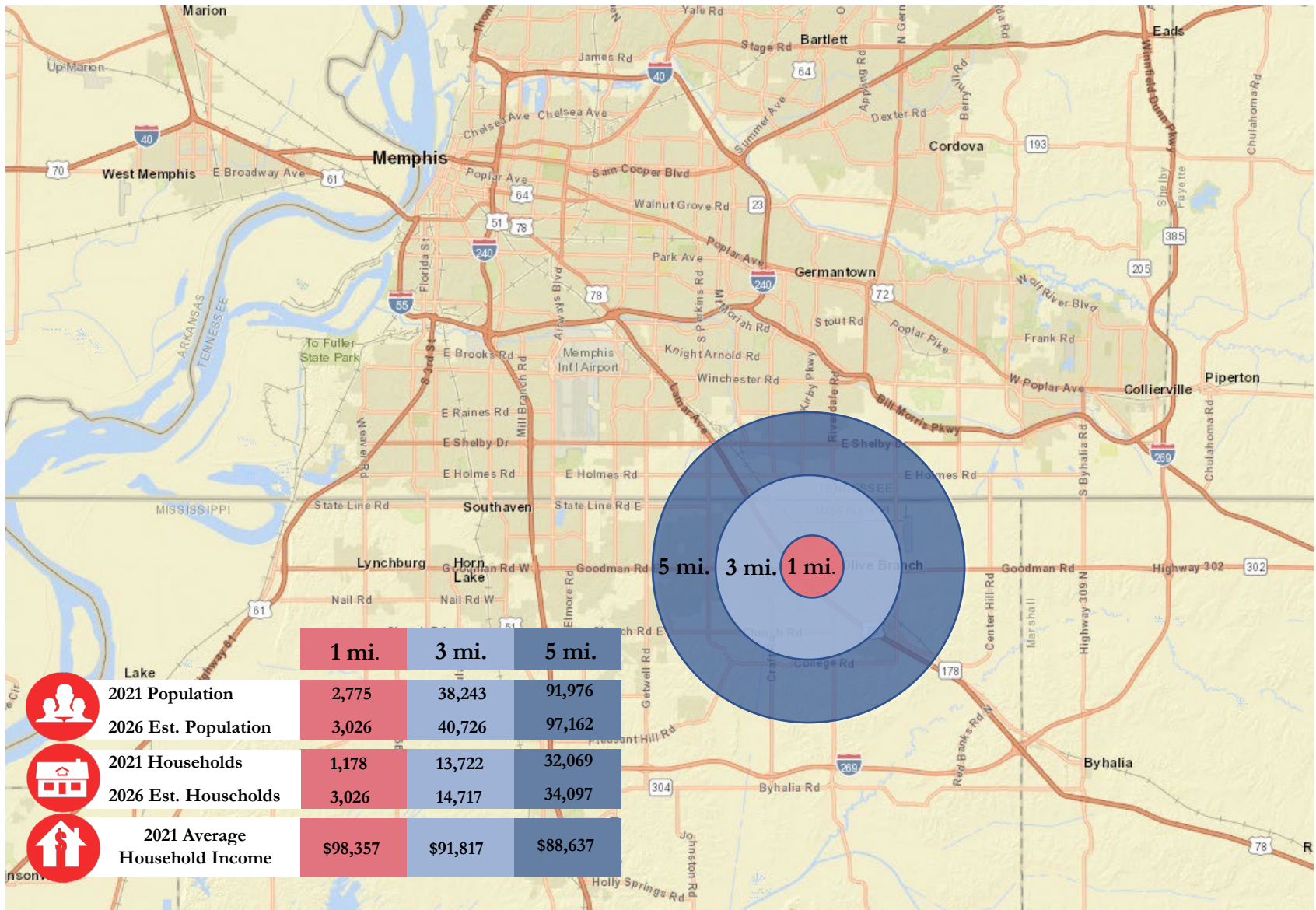


# Area Map

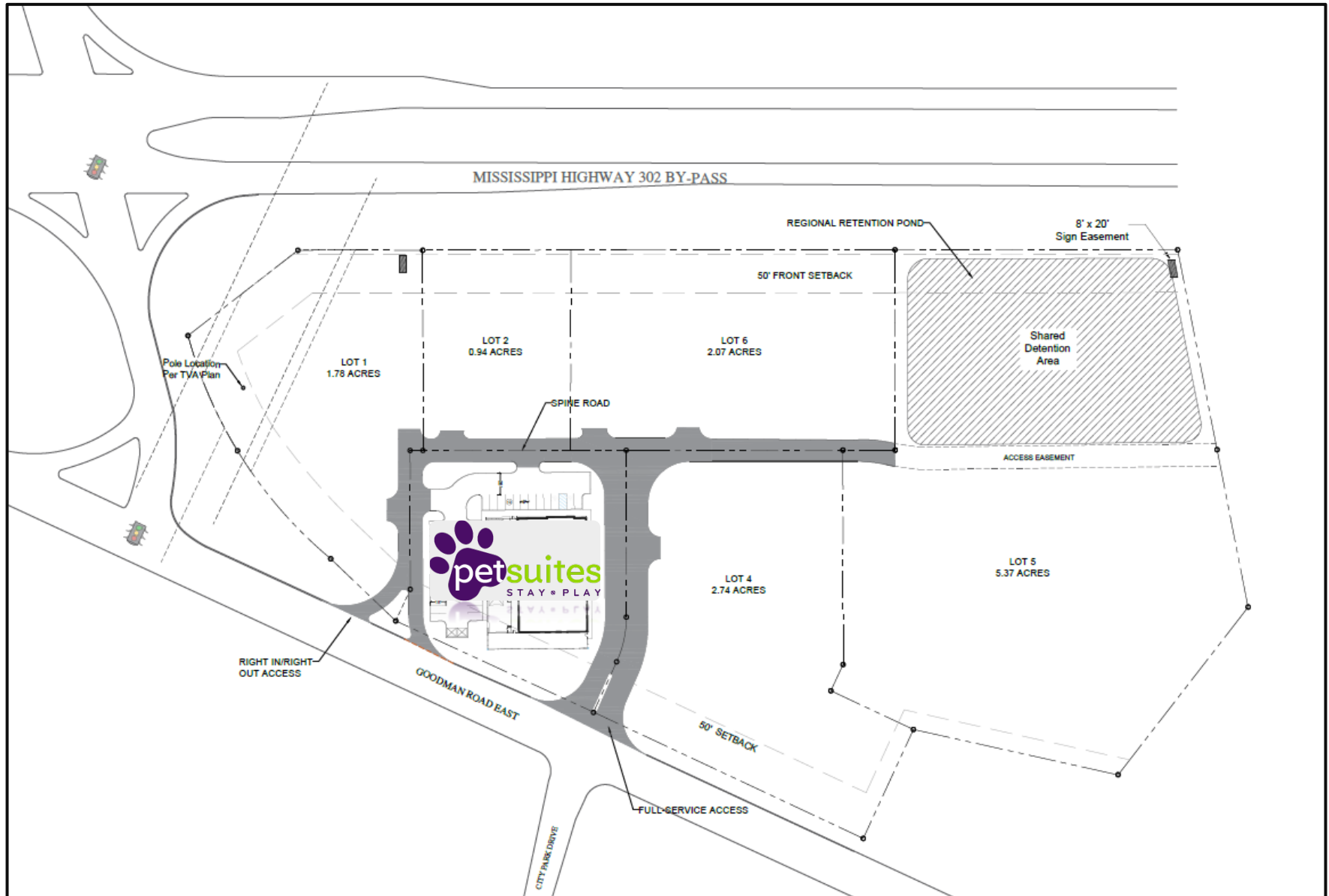




# Demographics



# Site Plan and Available Lots





## Final Plat with Easements

